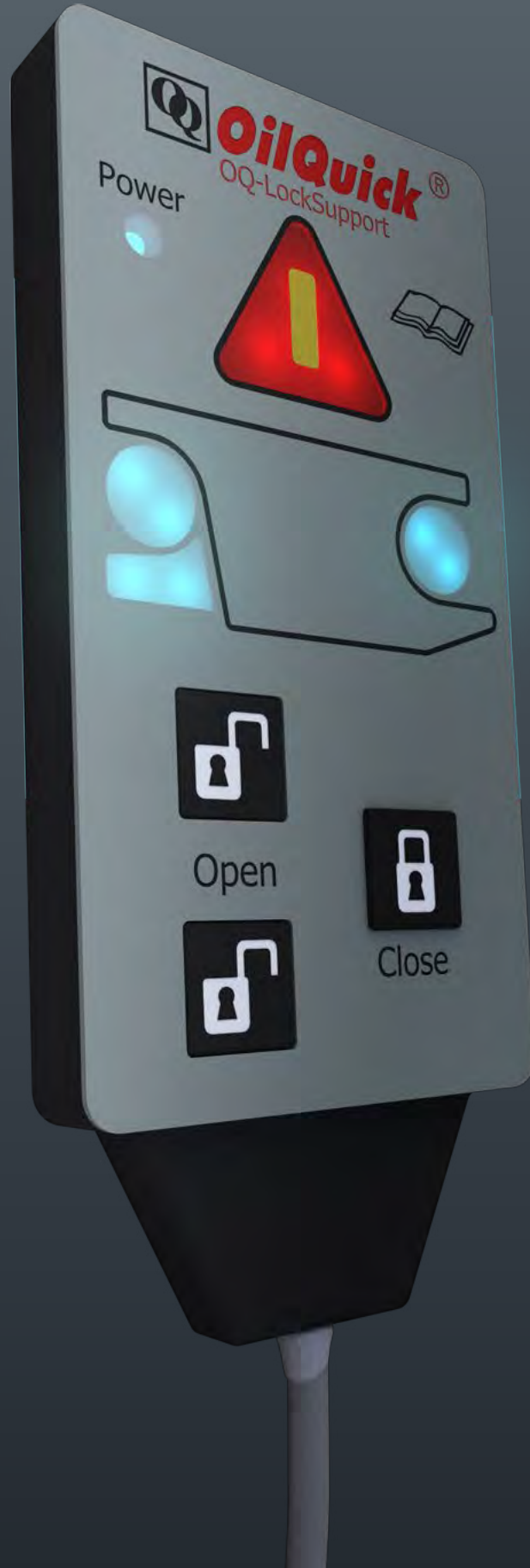




**OQLS** OQ LOCKSUPPORT

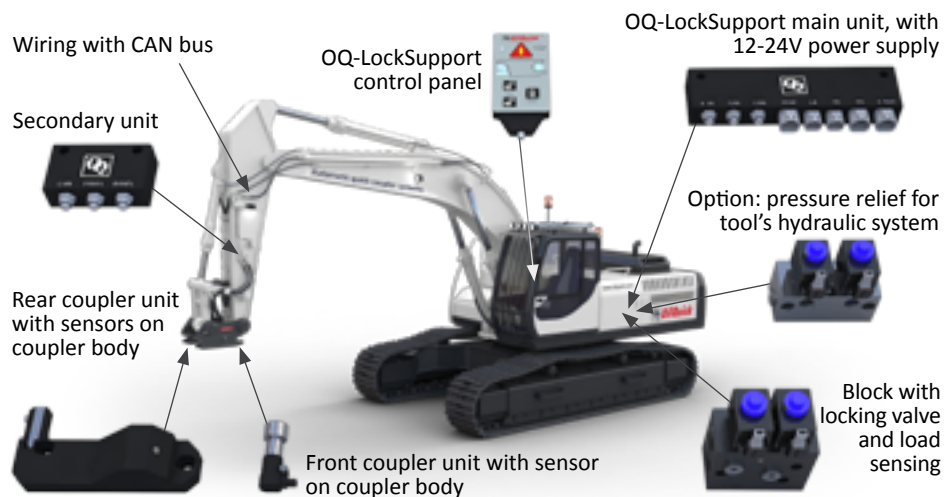


## Problem background

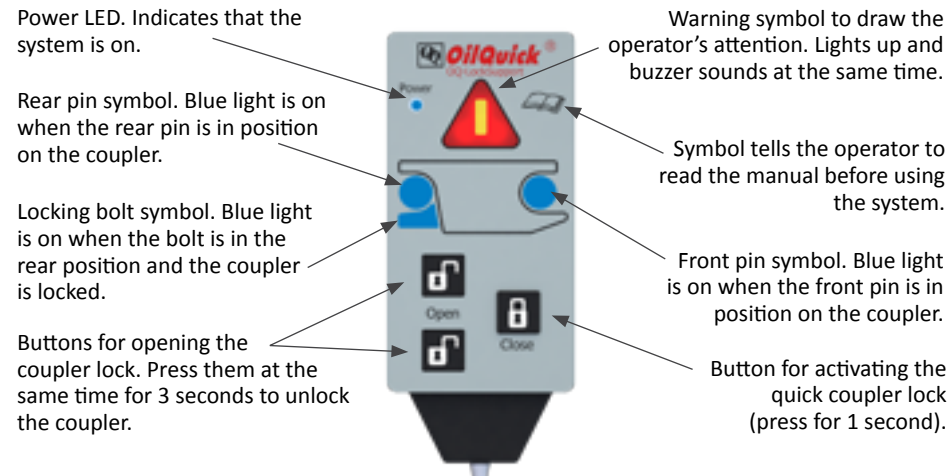
- Today's excavators are versatile and can be used with various attachments.
- Tools are often changed several times a day.
- Quick coupler operation is not however standardised:
  - Switches and levers vary in design and function.
  - The controls may be located in different places, depending on the machine.
  - Hydraulic systems frequently control several functions using switch-lever combinations and are not always easy to understand.
- It is difficult for the operator to be sure of attaching the work tool properly:
  - Unsure whether the coupler is positioned correctly on the tool.
  - Unsure regarding the position of the locking bolts.
- Tool changes are and remain a potential hazard when operating excavators with various attachments.

## The OilQuick solution is OQ-LockSupport (OQLS)

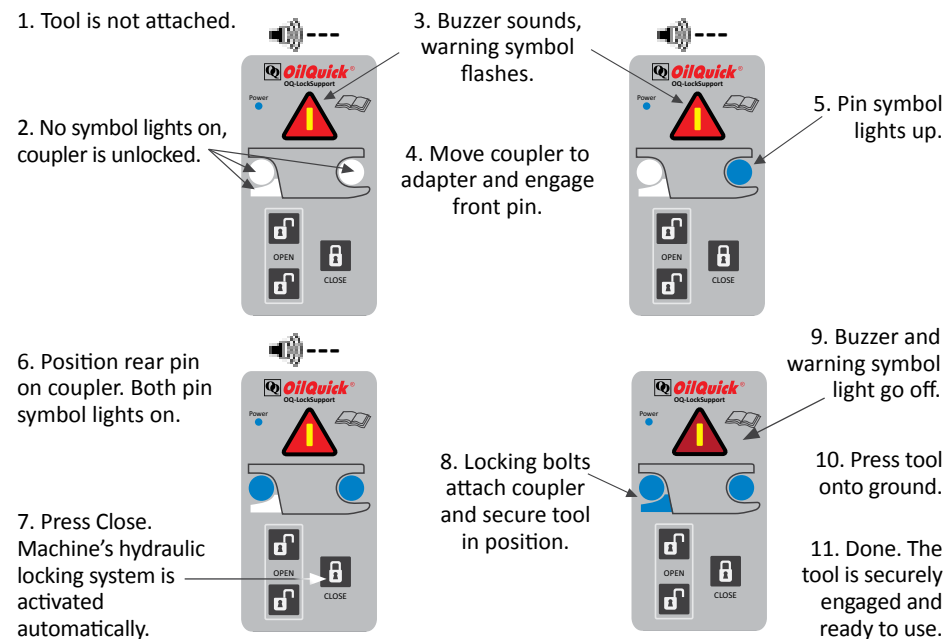
- Electronic control and monitoring system with active scanning of the lock for safe use of work tool attachments on excavators.
- Information and operation using the control panel in the cab.
- Meets the requirements of the EU Machinery Directive 2006/42/EG and the currently applicable standard EN 474-1: 2006 + A4: 2013.



## Information for the operator




## Steps for attaching tools



# Safe tool change with the OQ-LockSupport

- Conscious, controlled coupling procedure.
  - The operator is guided through all the steps on the control panel.
  - Intuitive, clear and user friendly.
  - Audio and visual warnings in hazardous situations.
- Sensor scans the adapter pin and position of the locking cylinder.
  - Different symbols for adapter pin and locking bolts.
- Machine's hydraulic system activated automatically.
  - The locking function is activated automatically without another hydraulic function having to be used.
- All system events are logged, the last 32 events are listed chronologically.
- Self-diagnosis function warns in the event of a system error.

A photograph of a male operator sitting in the cab of a piece of heavy machinery. He is wearing a dark long-sleeved shirt and dark pants. He is looking towards the camera with a slight smile. The cab has yellow handrails and various control levers. A yellow hydraulic hose is visible in the foreground. The background shows the interior of the cab and some mechanical parts.

**“With the OQLS I can  
now change buckets and other  
work tool attachments  
quickly and safely!”**

The OQ-LockSupport gives the operator a reliable tool for changing attachments safely.



OilQuick USA  
155 Main Street, Superior, WI 54880  
www.oilquickusa.com (262) 607-8425

Dealer: